

For first page only, start title here, i.e., drop title $\frac{3}{4}$ inch (20 mm) below the top margin

Physics and Cosmology in the New Millennium

(Title is 18 point Times Roman font, cap/lower case, single-spaced, bold, and centered)

Steven R. Smith*, George M. Brown[†], Jane S. Bond^{‡*}, and A. Giacometti[¶]

(Authors are in 14 point Times Roman font, cap/lower case, centered)

**Laboratory for Astronomy and Cosmology, NASA Goddard Space Flight Center, Greenbelt, MD 20771, USA*

[†]Department of Physics, Max-Planck-Institut für Physik, Seestrasse 3, 85748 Garching, Germany

[‡]Department of Astronomy, University of Rome, Via della Ricerca Scientifica, 00173 Rome, Italy

(Addresses are in 10 point Times Roman font, cap/lower case, italic, centered; use complete addresses)

Abstract. This is the sample paper for the 8.5 x 11 inch, single column format. Each paper must include an abstract. All papers in AIP Conference Proceedings are listed by various abstracting services and databases with complete abstracts. Indent two spaces from the left and right margins. Use 9 point Times Roman font size, fully justified. Begin the abstract with the word “Abstract” followed by a period in bold font. Continue with normal 9 point font. Leave two blank lines below the abstract.

INTRODUCTION

(1st level heading, 12 point, all caps, bold, centered)

Times Roman font is used throughout the paper with single line spacing and the text is fully justified. Paragraph style: indent first line three spaces (0.19 inches); there is no extra line spacing between paragraphs. **Use 10 point Times Roman font for text.** Avoid large blank areas within the text area and do not type outside the text area. Do not include any headers or footers in your document.

The trim size of the published book is 8.5 x 11 inches (216 x 280 mm). The text area on the page will be 6 $\frac{1}{2}$ inches wide by 8 $\frac{7}{8}$ inches long (165 mm x 226 mm). It is important to follow the specifications exactly when setting the margins. You may have to compute the margin settings and test them to make sure the text area dimensions are followed exactly. Embed all fonts when saving your file.

Microsoft Word templates and LaTeX style guides for the 8.5 x 11 inch, single column format are available on the AIP website at <http://www.aip.org/proceedings> in the panel for authors¹.

Contact your volume editor or conference chairperson regarding content, length, and scheduling of your manuscript. If you have questions regarding page layout, color artwork, permissions, or copyright, you may contact the AIP Conference Proceedings Editorial Office in Melville, New York, USA, via email at proceedings-mgr@aip.org.

OTHER SPECIFICATIONS

(1st level heading, 12 point, all caps, bold, centered)

Figures, tables, and equations must be inserted in the text and may not be grouped at the end of the paper. Important: miscounting of figures, tables, or equations may result from revisions. Please double check the numbering of these elements before you submit your paper to the volume editor.

¹ This is an example of a footnote. It is in 8 point Times Roman font.

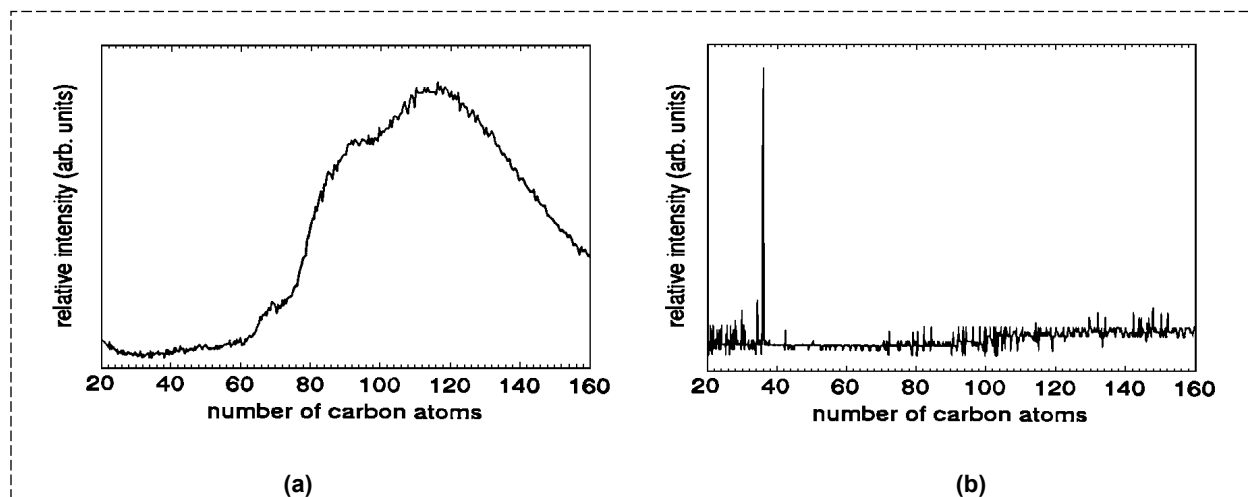


FIGURE 1. Use 9 point font size for figure captions. Figures must be inserted in the text and may not follow the Reference section. Center figure captions if they run one line only.

Figures

(2nd level heading, 12 point, cap/lower case, bold, centered)

Cite all figures in the text consecutively. The word “Figure” should be spelled out if it is the first word of the sentence and abbreviated as “Fig.” elsewhere in the text. *Place the figures as close as possible to their first mention in the text at the top or bottom of the page* with the figure caption positioned below, all centered. Figures must be inserted in the text and may not follow the Reference section. Set figure captions in 9 point size, Times Roman font. Type the word “FIGURE 1.” in bold all caps, followed by a period. Each figure must include a caption. The caption should be the full width of the text area; if the caption runs shorter than the width, center the caption.

Provide black-and-white figures if they should be printed in black-and-white. Figure 1 is an example of a black-and-white line drawing.

Color Figures

(3rd level heading, 10 point, cap/lower case, italic, centered)

Some color figures can be printed in black-and-white, but generally only with some loss of information. Check your figure legends carefully and remove any mentioning of color if the figure is to be printed in black-and-white. All color figures will be printed in black-and-white unless you make arrangements with your volume editor or AIP for color printing. If you accept the color page charge, AIP will need a letter or email from you, including complete contact information, accepting the additional charges. If required by your institute, AIP will need a purchase order number as well.

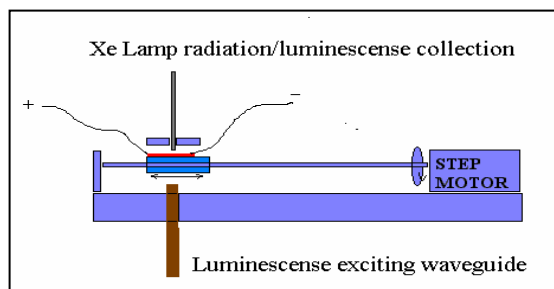


FIGURE 2. If you have *color in your figures*, AIP can convert them to black/white for no extra cost. In that case, check your figures carefully for possible loss of information. Avoid reference to color in the figure caption. If your figures are to be printed in color, it will be cost effective to group color figures on a single page as much as possible.

TABLE 1. Margins used for this sample paper.

	Margins MS Word, US Letter Size Paper^a	Margins MS Word, A4 Paper
Top	1.01"	1.36"
Bottom	1.01"	1.36"
Left	1.00"	0.88"
Right	1.00"	0.88"

^aThis is an example of a table footnote; measurements in inches.

Tables

(2nd level heading, 12 point, cap/lower case, bold, centered)

Number tables in the text with Arabic numerals. Give each table a concise title and define any abbreviations in footnotes to the table. Place tables at the top or bottom of the page, close to where they are first cited. Center the table in the width of the text area. Fonts for the entire table are Times Roman, 9 point size, including title and footnotes. Type the word “TABLE 1.” in bold, all caps, followed by a period. The table title should be in normal font, caps, and lower case. Margins used for this sample paper are indicated in Table 1.

Equations

(2nd level heading, 12 point, cap/lower case, bold, centered)

Make your equations clear and legible, centered, with a space above and below. Equations should be the same point size as the text, i.e., 10 point font.

Place each equation on a separate line and number all equations sequentially. Enclose the equation number in parentheses and place it flush with the right-hand margin. Equation (1) is an example of a one-line equation. Please double-check your equation numbering before submitting your paper to the volume editor. Please make sure to embed all fonts when saving your file so that special characters do not get lost.

Equation (1) is placed here as an example:

$$\frac{d[F_1]}{d\omega_2} = SAm_2 \cos \omega, \frac{d[F_1]}{d\omega_3} = SAm_3 \cos \omega. \quad (1)$$

FOOTNOTES

(1st level heading, 12 point, all caps, bold, centered)

Footnotes should be placed at the bottom of the page where they are cited by superscript numbers. Place a ½ point rule 2 inches (50 mm) long above the footnote. Leave ¼ inch (6 mm) blank space above the rule and ⅛ inch (3 mm) blank space below the rule. Set the footnote in 8 point Times Roman font.

COPYRIGHT TRANSFER

(1st level heading, 12 point, all caps, bold, centered)

Your paper must be accompanied by an AIP Transfer of Copyright Agreement, completed and signed by at least one author. A blank form is included with the Instruction Booklet or you may download the form as a pdf file from the AIP website at <http://www.aip.org/proceedings>, click on *Authors-Forms*.

PERMISSIONS

(1st level heading, 12 point, all caps, bold, centered)

To use previously published material from a book or journal, you must obtain written permission from the owner of the rights to the material (the original publisher and/or author). It is your responsibility to obtain permission to use copyrighted material. The executed permissions need to be sent along with the manuscript to your volume editor.

Most publishers offer submission of permission requests online or via email, which may be the fastest and most convenient way of receiving a reply. You may also use the Permission Request Form to request permission to reprint text, tables or figures. You may complete this form and fax it to the publisher or author of the material you wish to use. A blank form is included with the Instruction Booklet or you may download the form as a pdf file from the AIP website at <http://www.aip.org/proceedings>, click on *Authors-Forms*.

When the signed permission is returned to you, *please insert any necessary credit lines* in your figure or table legends.

ACKNOWLEDGMENTS

(1st level heading, 12 point, all caps, bold, centered)

Acknowledgments should be positioned at the end of the paper before the reference section. The text of the acknowledgments is in 10 point font.

REFERENCES

(1st level heading, 12 point, all caps, bold, centered)

When referring to citations in the text, in square brackets [] show the number in order of appearance. In the reference section, the references themselves are in 9 point size font, single line spacing. List all references in numerical order. *Note:* figures and tables must be inserted in the text and may not follow the Reference section.

1. M. P. Brown and K. Austin, *The New Physique*, Publisher, London, 2002, pp. 25-30.
2. M. P. Brown and K. Austin, *Appl. Phys. Letters* **80**, 2503-2504 (2002).
3. R. T. Wang, "Title of Chapter," in *Classic Physiques*, edited by R. B. Hamil, Publisher, New York, 2002, pp. 212-213.
4. C. D. Smith and E. F. Jones, "Load-Cycling in Cubic Press" in *Shock Compression of Condensed Matter-2001*, edited by M. D. Furnish et al., AIP Conference Proceedings 620, Melville, New York, 2002, pp. 651-654.